



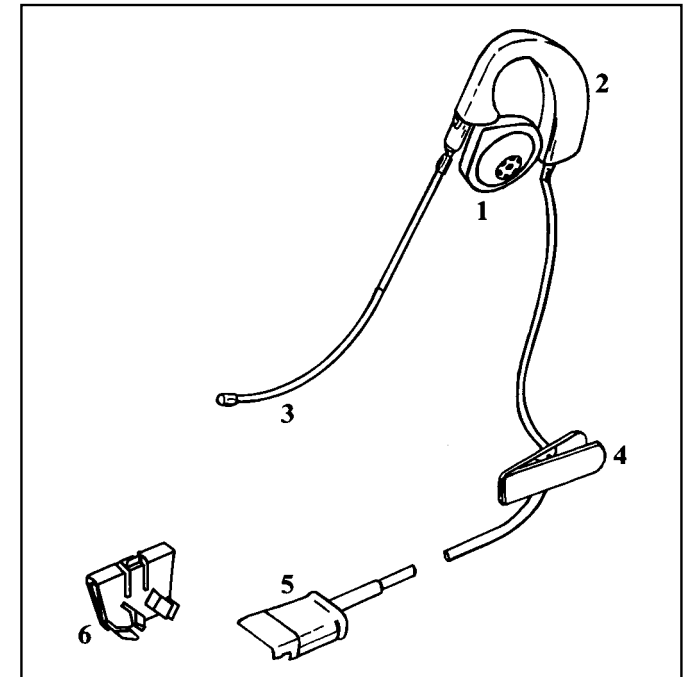
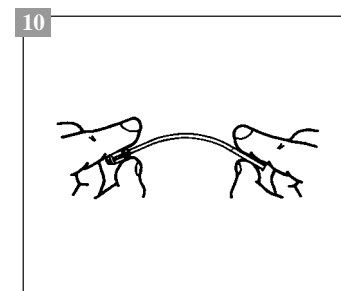
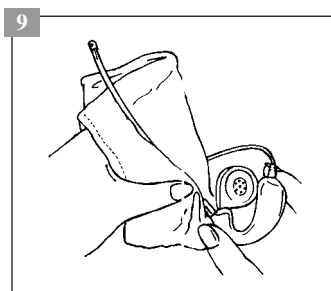
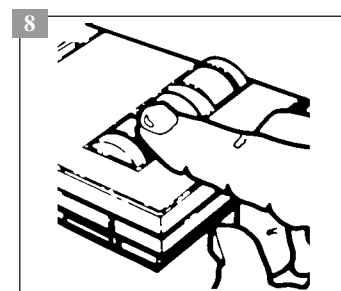
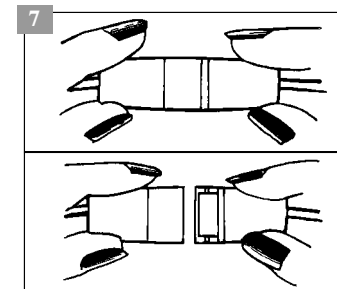
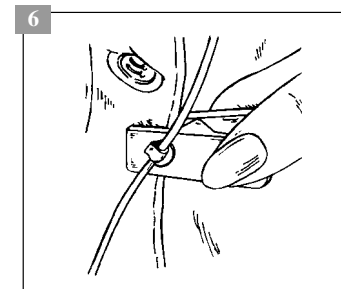
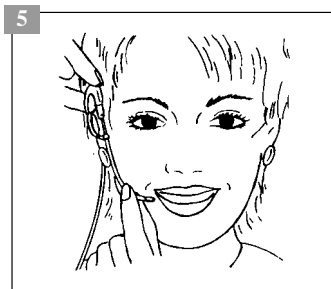
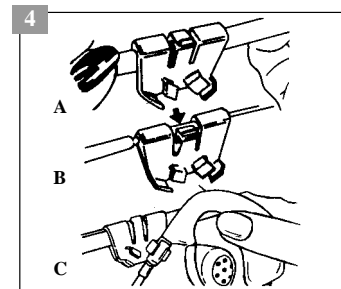
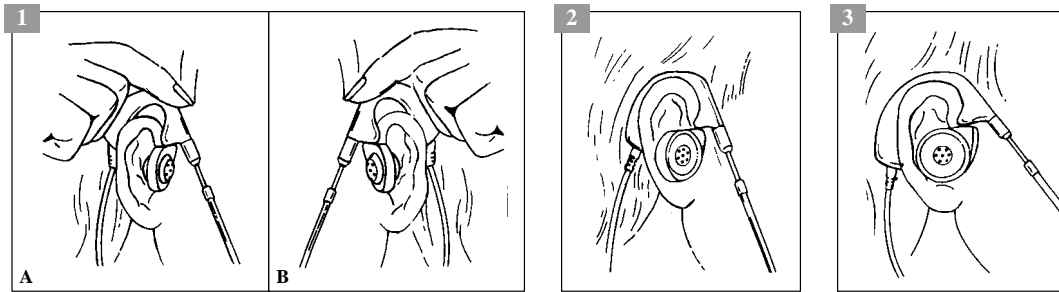
Mirage[®] Ultra

User instructions

Mode d'Emploi

Instrucciones para el Usuario

Instruções para o Usuário



LEGEND

- 1 Receiver
- 2 Capsule
- 3 Voice Tube
- 4 Clothing Clip
- 5 Quick Disconnect™
- 6 Eyeglass adapter

Mirage Usage Instructions

1 Placing the headset capsule on your ear

Your Mirage headset has been designed so that it can be worn on either ear. Before placing the capsule on your ear, position the receiver so that it points outward. If Mirage is to be worn on the right ear, position the receiver as shown in Figure 1A. For usage on the left ear, position the receiver as in Figure 1B.

2 Extend the voice tube approximately 2.5 cm. Hold the Mirage capsule above your ear and against your head. Slide the capsule downward, behind the top portion of your ear until positioned as shown in Figure 2.

3 Positioning the receiver

After placing the headset capsule on your ear, rotate the receiver to rest against the centre of your outer ear for maximum comfort and hearing level (Figure 3).

Note: Do not try to rotate the receiver beyond the voice tube.

4 Attaching the capsule to glasses

- If your headset is not sufficiently secure on your ear, use the eyeglass clip.
1. For plastic frames slip the eyeglass clip onto either the left or right side of your glasses (Figure 4A).
 2. For thin metal frames, pull back the tab on the top of the eyeglass clip (Figure 4B). Slip onto the desired side of your glasses so that the clip is held in place when the tab is released.
 3. Attach the capsule to the eyeglass clip (Figure 4C).

5 Adjusting the voice tube

The voice tube on your headset is adjustable in two ways: First, it pivots at the metal ball joint of the capsule; and second, it telescopes in and out.

With one hand, hold the capsule securely against your head, and with the other hand hold the voice tube at the bend. Pull or push in, and rotate the tip of the voice tube to a position off the corner of your mouth (Figure 5).

6 Adjusting the clothing clip

The clothing clip, when used properly, keeps the weight of the cord from affecting the stability of the headset.

Attach the clothing clip to part of your clothing at chest level. Press the cable clamp ends in to adjust the amount of slack in the cord. The cord between the headset and the clothing clip should have enough slack so the headset is not disturbed by head movements.

7 Quick Disconnect™

Some headsets come equipped with a miniature connector called a Quick Disconnect, which allows you to put a call on hold and perform tasks away from the telephone without removing your headset.

Grasp each half of the Quick Disconnect as shown and pull straight apart. The call will remain on the line. When you return to your telephone, reconnect the Quick Disconnect, and the conversation can resume.

8 Volume control

To set the volume control (Figure 8) to the listening level most comfortable for you, start with the wheel turned to #1, the lowest level. To increase the volume, rotate the wheel to a higher number.

Note: Some headset models do not have an amplifier or volume control.

9 Care of your headset

Periodically wipe the capsule, receiver and voice tube with a soft damp cloth, lightly dampened with water. **Do not use alcohol, cleaning solvents or detergents.**

10 Adjusting the mouthpiece

Carefully shape the boom with both hands as shown. Do not bend or twist the boom within 1/2 inch of the microphone.

11 Position the turret and boom so that the microphone is two finger widths from the corner of your mouth.

LÉGENDE

- 1 Écouteur
- 2 Capsule
- 3 Perche de Microphone
- 4 Pince à Vêtements
- 5 Quick Disconnect™
- 6 Adaptateur pour Lunettes

LEYENDA

- 1 Receptor
- 2 Cápsula
- 3 Tubo de la Voz
- 4 Presilla para la Ropa
- 5 Quick Disconnect™
- 6 Adaptador para Anteojos

TABELA

- 1 Receptor
- 2 Cápsula
- 3 Tubo de Voz
- 4 Grampo para Roupa
- 5 Quick Disconnect™
- 6 Adaptador para Óculos

